

# Excelis 4K

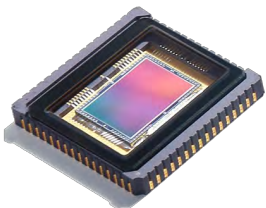
UHD MICROSCOPY CAMERA

The new Excelis 4K, 8MP CMOS color microscopy camera delivers exceptional color images with exceptional resolution.

The revolutionary, feature-rich *CaptaVision+* software provides advanced camera controls for image acquisition, image processing, measurements, report generation, plus more!



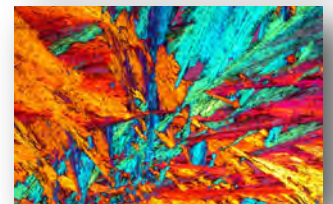
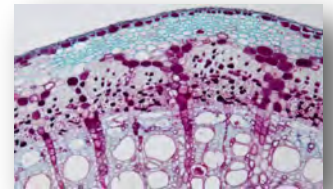
## High Resolution AND High Sensitivity



The Excelis 4K features a SONY IMX183C back-illuminated camera sensor for outstanding light sensitivity, a rolling shutter for fast imaging speed, and an improved image signal processor for exceptional color rendering.

## Capture MORE Detail

The new Excelis 4K, 8MP CMOS color microscopy camera delivers higher resolution than ever before. Its 2.4µm pixels match perfectly with microscope optics to deliver images with 4X higher resolution than HD!



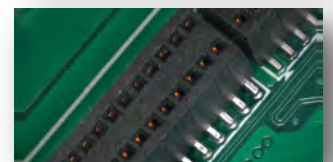
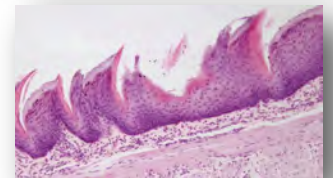
## More Ways To Share Images

Use the HDMI interface to view live 4K 2160p images at 30fps on a compatible monitor. Connect

the 4K to a PC via the USB 3.0 interface for simple, convenient and stable data transmission. Use the ethernet port to connect the 4K to a network to view and share live images across the network or internet.

## Feature-Rich *CaptaVision+* Imaging Software

The innovative interface and workflow-based design redefines the image acquisition → editing → measurement → report output process saving operating time and improving productivity.



- True 4K 2160p viewing at fast 30fps
- HDMI, USB 3.0, and Ethernet triple functionality!
- Built-in software—No PC required!
- *CaptaVision+* Imaging Software



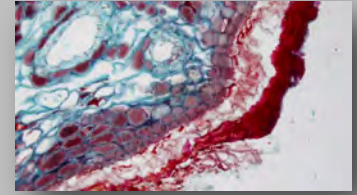
## CAMERA & SOFTWARE SPECIFICATIONS

Model	AU-800-4K
Sensor / Model	CMOS • Sony IMX183C, color
Sensor Size	15.86mm (2/3")
Resolution	8MP; 3840 (H) X 2160 (V)
Pixel Size	2.4µm
Frame Rate	HDMI: 30fps@3840x2160 USB 3.0: 25fps@3840x2160 Ethernet: 30fps@3840x2160
Image Capture	8MP / USB 3.0 memory stick (not included)
Exposure Time	2ms—10s
White Balance	Auto / manual
Settings	Gain, gamma, saturation
Data Interface	USB 2.0, USB 3.0, HDMI, Ethernet
PC Imaging Software	HDMI: Built-in (Cloud 1.0) PC/Ethernet: <i>CaptaVision+</i> Imaging Software for PC Advanced Camera Controls: live/still image measurement and annotation; flat field correction; extended depth of focus (focus stacking); image stitching; fluorescence image settings; fluorescence multi-color channel merge; HDR (High Dynamic Range) function Image Types: JPEG, PNG, TIFF, DICOM
System Software Compatibility	Windows 7, 8, and 10 (32/64 bit)

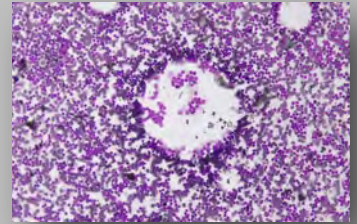
*Design, features and specifications are subject to change without notice.*

## *CaptaVision+* Features

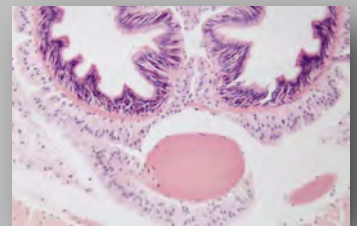
- Intelligent 12-bit ISP color reproduction
- Real-time depth-of-field fusion
- Real-time image stitching
- Real-time fluorescence image synthesis and editing
- HDR image synthesis
- Micro-imaging-based intelligent automatic exposure
- Intelligent flatfield correction based on dynamic calculation
- Smart measurement workflow
- Implements multiple iterations of workflow execution
- Supports single shot, delayed camera
- Automatic video and delay video generation
- Output format selection
- User parameter group save and load
- Dynamic / static measurement
- Layered measurement
- Customize measuring gauges, layers, precision, image naming, style, save location
- Data export as TXT or Excel
- Drawing tools: points, lines, rectangles, polygons, circles, arcs & angles
- Report generation and printing



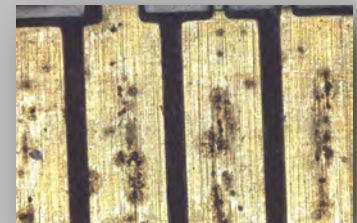
True color reproduction



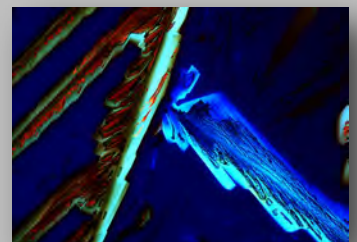
Outstanding resolution



Exceptional detail



High dynamic range



Brilliant color

ISO

9001 • 14000

